

SCT

**SUPERCHIPS CUSTOM TUNING
POINT. CLICK. TUNE.**



**Retro Style,
High Performance
Engine,
SCT Custom Tune...
The Ultimate
Mustang!**

When we created a Superchips Custom Tuning performance program for the 2005 Mustang, we didn't just make a few universal changes at full throttle, we made many changes throughout the power band, from part throttle through wide open throttle.

The result was not only **20 more Rear Wheel Horsepower** and **25 more Rear Wheel Foot Pounds of Torque**, but **INCREASED THROTTLE RESPONSE** and **IMPROVED GAS MILEAGE**.



2005 MUSTANG CUSTOM TUNING



The new 2005 Mustangs have arrived and SCT is ready with Custom Calibrations available today to Add **MORE Horsepower & MORE Torque** to your new Pony Car!

KNOWLEDGE IS POWER!

With the release of the all-new 2005 Ford Mustang (known as the S197 to insiders), the Ford aftermarket will be reborn. But this time it will be reborn in a different way, a better way. SCT's firsthand experience with a 2005 CP Level Mustang Prototype was unforgettable. Because of all the changes to this car, there is some important information that ALL aftermarket shops & consumers should know about before trying to custom tune one of these cars.



DRIVE BY WIRE!

The 2005 Mustangs use an ETC system (Electronic Throttle Control, sometimes known as "drive by wire") to control the throttle. With ETC there is no more mechanical throttle cable, instead there is a motor that now controls the opening and closing of the throttle blade. Because of how the ETC system works, it is critical that the vehicle be calibrated / tuned correctly. **SCT is the first aftermarket company to offer a aftermarket tuning solution and tuning support for the 2005 Mustang!** SCT has released it's new flash device necessary for tuning the 2005 Mustang, our XCalibrator.



A NEW COMPUTER

The 2005 Mustang has a new type of processor. The new Processor (PCM) is a Power PC based module (PPC). The new PCM was needed to control the new drive by wire system. A very important note is the new PCM does not have a place for a plug in chip. This means the only way to change the calibration in a 2005 Mustang is by re-flashing the processor through the OBD-II port under the dash. **SCT's new XCalibrator allows you to re-flash your 2005 Mustang PCM with up to 3 custom calibrations provided by one of SCT's Dealers while retaining the factory tune.**

MORE POWER, MORE TORQUE



4.6L 3V + BASIC MOD'S = POWER

The engines in both versions of the Mustang are new for the car. The base model car uses a 4.0L V6, and the 3V-4.6L goes into the GT. The new 3v engine uses IMRC's, but they are designed to control swirl and not change the tuning length of the intake manifold runners. So, at Wide Open Throttle (WOT), the IMRC's are always open. Because of this removing the IMRC's does not impact low speed torque like it does on a 4.6L 4v Cobra. On the dyno the stock manual transmission GT makes about 265rwhp / 290rwtq while the automatic version lays down about 248rwhp. Adding a SCT Calibration & a few basic modifications and the results jump to a impressive **293 Rear Wheel Horsepower & 309 Rear Wheel Foot Pounds of Torque!**



2005 MUSTANG 5spd Manual Transmission with an SCT Custom Calibration & Basic Modifications

Want to know what modifications? Visit our website at www.SCTFLASH.com to view the 2005 Mustang Vehicle Profile & Complete List of modifications

THE REVOLUTION OF CUSTOM TUNING



With the release of the 2005 Mustang Custom Tuning has changed. The days of installing a chip are gone, and the new revolution in Custom Tuning has arrived. SCT's new XCalibrator comes loaded with 3 Custom Calibrations, and retains your factory calibration for quick restoration back to stock. Visit www.SCTFLASH.com for more information and to locate the closest SCT Dealer to you.



www.SCTFLASH.com • (407) 774-CHIP

134 Baywood Avenue • Longwood Florida 32750 USA • Phone: (407) 774-2447 • Fax: (407) 260-6275
Superchips Custom Tuning, SCT, Raptor, Big-Air, Extreme Tuner, Eliminator Switch Chips, XCalibrator & Quicktune 2005 are registered trademarks of Superchips Custom Tuning LLC. © Copyright 2004 Superchips Custom Tuning LLC
**Disclaimer: Not legal for sale or use on pollution controlled vehicles



**SUPERCHIPS CUSTOM TUNING
POINT. CLICK.TUNE.**

**XCALIBRATOR
THE NEW REVOLUTION
IN CUSTOM TUNING**

Xcalibrator

MULTI-PROGRAM OBD-II FLASH DEVICE



SCT XCalibrator Flash Device Features:

- ✓ Increases Horsepower, Torque, Gas Mileage & Throttle Reponse
- ✓ Pre-Programmed with up to 3 Custom Calibrations specifically for your vehicle
- ✓ Retains Factory Calibration for easy restoration back to the stock calibration
- ✓ Ability to Flash the newest Ford Vehicles such as the all new 2005 Mustang, 2003 - 2004 F-Series 6.0L Diesel Trucks, and the wildly popular F-150 Trucks.
- ✓ Easy installation. No tools necessary
- ✓ Quicktune 2005 Custom Tuning included
- ✓ Easy to use push button & LED interface
- ✓ Quickly Flashes PCM via OBD-II diagnostic port

Have you been waiting for the ability to tune the 2005 Mustang?



THE WAIT IS OVER. SCT is the first aftermarket company to release a Multi-Program Flash Device and Custom Calibrations for the all new 2005 Mustang. SCT's new Xcalibrator will allow you to flash your new '05 Mustang with up to 3 Custom Calibrations, and also allow you to tweak your Custom Calibration using our new Quicktune 2005 Custom Tuning Software.

Also available for the first time anywhere are Custom Calibrations for the wildly popular **2004+ F-150 Gas Trucks** and the **2003 - 2005 F-250 thru F-550 6.0L Diesel Ford Trucks**. Other software firsts include Custom Calibrations available for the **SVT Focus, Lincoln LS, Thunderbird, and 205mph Ford GT Supercar.**

Your local SCT Dealer can load the XCalibrator with up to three custom tunes specifically calibrated for your vehicle. To program your vehicle you follow a very simple sequence using the XCalibrator's 5 LED's and 2 buttons on the front of the unit. To program your vehicle simply plug the device in, and using the Select button, pick the custom program you wish to load. Once you have selected the program you wish to load, you simply hold down the program button for two seconds. The LED for the matching program number will flash as it saves the factory file and uploads the custom program. YES! It is that easy!

SCT's new XCalibrator supports the following applications:

- 1996 - 2005 Mustang
- 2005 Ford GT Supercar
- 1996 - 2005 F150
- 1996 - 2005 F250 - F550 7.3L / 6.0L Diesel
- 1996 - 2005 Explorer
- Thunderbird
- SVT Focus
- Lincoln LS

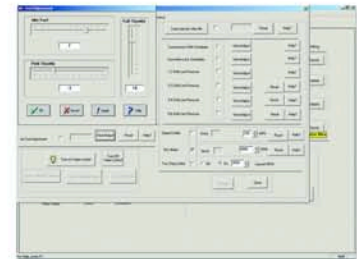
Most Ford Processors are supported. Contact the SCT Dealer nearest you for more information.



Quicktune 2005

Quick Tune your own vehicle!

Our new SCT Quicktune 2005 software now allows you to custom tune your own vehicle! Create up to 4 custom tunes at once on your Windows based PC or load and tweak a custom tune from a participating Superchips Custom Tuning Network Dealer. Quicktune's easy to use software screens allow you to easily build your own custom tuned file. Just select your vehicle modifications from our large list of aftermarket modifications and Quicktune does the rest. Creating a custom tuned file from scratch has never been easier.



Quicktune 2005 Screen Shot

www.SCTFLASH.com • (407) 774-CHIP

134 Baywood Avenue • Longwood Florida, 32750 USA • Phone: (407) 774-2447 • Fax: (407) 260-6275
Superchips Custom Tuning, SCT, Extreme Tuner and Quicktune 2005 are registered trademarks of Superchips Custom Tuning LLC
© Copyright 2004 Superchips Custom Tuning LLC **Disclaimer: Not legal for sale or use on pollution controlled vehicles